



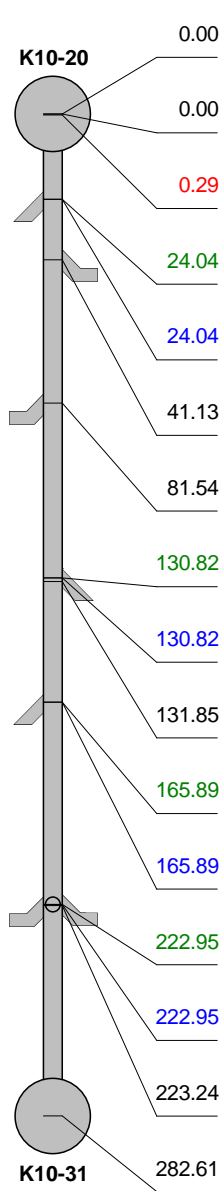
## Inspection report

Date: <b>7/31/2020</b>	Work Order:	Weather:	Surveyed By: <b>Thomas Whitby</b>	Certificate Number: <b>U-217-07006886</b>	Pipe Segment Ref.: <b>1740</b>
Year laid:	Pre-cleaning:	Direction: <b>Upstream</b>	Pipe Joint Length:	Total Length: <b>282.6'</b>	Length Surveyed: <b>282.6'</b>

City: <b>Montrose</b>	Drainage Area:	Upstream MH: <b>K10-31</b>
Street: <b>114 Vista View</b>	Media Label:	Up Rim to Invert: <b>0.0</b>
Location Code:	Flow Control:	Downstream MH: <b>K10-20</b>
Location Details:	Sheet Number:	Down Rim to Invert: <b>0.0</b>
Pipe shape: <b>Circular</b>	Sewer Use:	Total gallons used: <b>0.0</b>
Pipe size: <b>8"</b>	Sewer Category: <b>SEC</b>	Joints passed: <b>0</b>
Pipe material: <b>Concrete Segments (unbolted)</b>	Purpose:	Joints failed: <b>0</b>
Lining Method:	Owner:	

Additional Info:

1:2133	Distance	Code	Observation	Counter	Photo	Grade
	0.00	AMH	Manhole / Start inspection	00:00:09		
<b>K10-20</b>	0.00	MWL	Water Level, 5% of the vertical dimension	00:00:17		
	0.29	CC	Crack Circumferential from 12 o'clock to 12 o'clock, within 8 inch	00:00:32		S1
	24.04	TBD	Tap Break-In Defective at 2 o'clock, 4inch dim / RMC	00:01:38		M3
	24.04	RMC	Roots Medium Connection from 2 o'clock to 4 o'clock, 10% lost	00:02:01		M3
	41.13	TS	Tap Saddle at 9 o'clock, 4inch dim	00:03:08		
	81.54	TB	Tap Break-In at 2 o'clock, 4inch dim, within 8 inch	00:04:28		
	130.82	TBD	Tap Break-In Defective at 10 o'clock, 4inch dim / RMC	00:06:20		M3
	130.82	RMC	Roots Medium Connection from 8 o'clock to 10 o'clock, 10% lost	00:06:45		M3
	131.85	MGP	General Photograph	00:07:16		
	165.89	TBD	Tap Break-In Defective at 3 o'clock, 4inch dim	00:08:33		M3
	165.89	RMC	Roots Medium Connection from 2 o'clock to 4 o'clock, 5% lost	00:08:47		M3
	222.95	TBD	Tap Break-In Defective at 10 o'clock, 4inch dim / RMC	00:11:09		M3
	222.95	RMC	Roots Medium Connection from 9 o'clock to 12 o'clock, 10% lost	00:11:26		M3
	223.24	TS	Tap Saddle at 1 o'clock, 4inch dim	00:11:54		
<b>K10-31</b>	282.61	AMH	Manhole / End inspection	00:14:00		





## Section Pictures - 7/31/2020 - 1740

City	Street	Date	Pipe Segment Reference	Nr.
Montrose	114 Vista View	7/31/2020	1740	4



1740\_d51ccd5c-1f82-4bac-8b03-b0277ad9f8f9\_20200731\_114048\_928.jpg,00:00:09,0.00ft Manhole



1740\_3e526944-2a83-4d7d-8081-6a0f6ebf665b\_20200731\_114054\_590.jpg,00:00:17,0.00ft Water Level, 5% of the vertical dimension



## Section Pictures - 7/31/2020 - 1740

City	Street	Date	Pipe Segment Reference	Nr.
Montrose	114 Vista View	7/31/2020	1740	4



1740\_57650a6e-aed2-4519-8570-5ae3f6a75886\_20200731\_114109\_591.jpg, 00:00:32, 0.29ft  
Crack Circumferential from 12 o'clock to 12 o'clock, within 8 inch



1740\_400529b0-4bd0-4ec7-acd2-d002d2e4ddae\_20200731\_114215\_191.jpg, 00:01:38, 24.04ft  
Tap Break-In Defective at 2 o'clock, 4inch dim



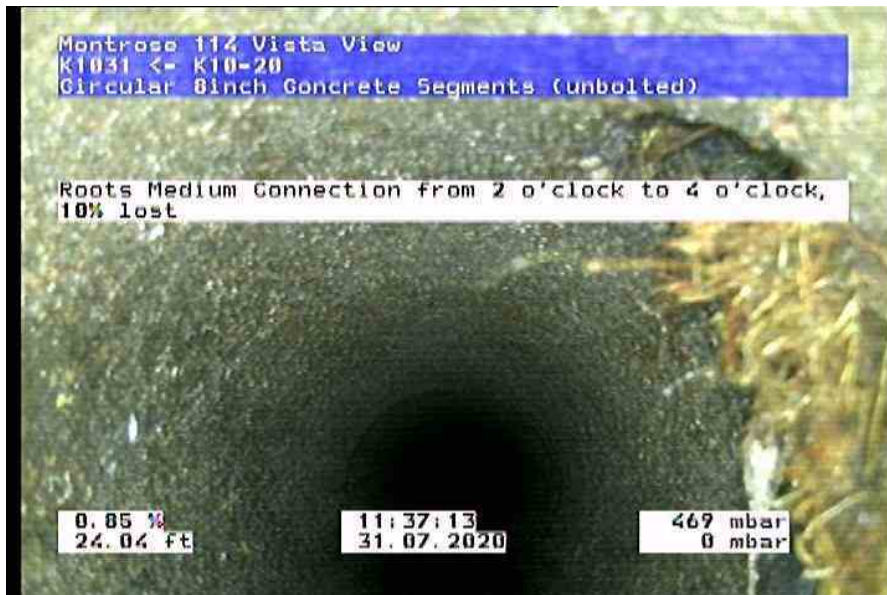


## Section Pictures - 7/31/2020 - 1740

City	Street	Date	Pipe Segment Reference	Nr.
Montrose	114 Vista View	7/31/2020	1740	4



1740\_b090610c-e417-44db-9cde-c99883c57729\_20200731\_114249\_747.jpg, 00:01:38, 24.04ft  
Tap Break-In Defective at 2 o'clock, 4inch dim



1740\_4d2091e4-55e2-4518-aa77-99157149a435\_20200731\_114238\_879.jpg, 00:02:01, 24.04ft  
Roots Medium Connection from 2 o'clock to 4 o'clock, 10% lost



## Section Pictures - 7/31/2020 - 1740

City	Street	Date	Pipe Segment Reference	Nr.
Montrose	114 Vista View	7/31/2020	1740	4



1740\_aafdc0de-a642-4c30-a2cb-bb815c6b9358\_20200731\_114345\_398.jpg,00:03:08,41.13ft  
Tap Saddle at 9 o'clock, 4inch dim



1740\_bdb178ae-7157-486d-b695-3cc774091856\_20200731\_114352\_318.jpg,00:03:08,41.13ft  
Tap Saddle at 9 o'clock, 4inch dim





## Section Pictures - 7/31/2020 - 1740

City	Street	Date	Pipe Segment Reference	Nr.
Montrose	114 Vista View	7/31/2020	1740	4



1740\_99538d55-1a2f-48fc-8950-f86a0d856b6f\_20200731\_114505\_636.jpg, 00:04:28, 81.54ft  
Tap Break-In at 2 o'clock, 4inch dim, within 8 inch



1740\_e2bdc80e-12e1-40f8-a828-a293ef7a5154\_20200731\_114512\_394.jpg, 00:04:28, 81.54ft  
Tap Break-In at 2 o'clock, 4inch dim, within 8 inch

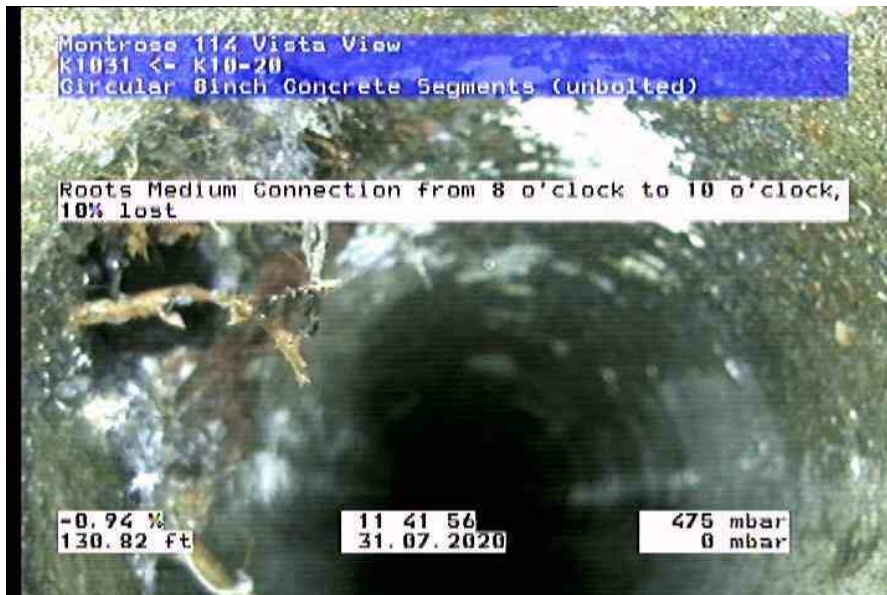


## Section Pictures - 7/31/2020 - 1740

City	Street	Date	Pipe Segment Reference	Nr.
Montrose	114 Vista View	7/31/2020	1740	4



1740\_808e9b22-5b71-4ce9-bee7-baaa419aa1be\_20200731\_114734\_727.jpg, 00:06:20, 130.82ft  
Tap Break-In Defective at 10 o'clock, 4inch dim



1740\_1bc0e31e-707f-4342-b6b2-33716877f06e\_20200731\_114722\_096.jpg, 00:06:45, 130.82ft  
Roots Medium Connection from 8 o'clock to 10 o'clock, 10% lost



## Section Pictures - 7/31/2020 - 1740

City	Street	Date	Pipe Segment Reference	Nr.
Montrose	114 Vista View	7/31/2020	1740	4



1740\_4e800c32-e11a-482f-adf5-f5db7326430f\_20200731\_114753\_574.jpg, 00:07:16, 131.85ft  
General Photograph



1740\_91869521-bbe6-4073-b03d-7585c0b0f748\_20200731\_114910\_934.jpg, 00:08:33, 165.89ft  
Tap Break-In Defective at 3 o'clock, 4inch dim





## Section Pictures - 7/31/2020 - 1740

City	Street	Date	Pipe Segment Reference	Nr.
Montrose	114 Vista View	7/31/2020	1740	4



1740\_3f4a5f8d-6ae9-4816-bcb0-356b424b5023\_20200731\_114935\_939.jpg, 00:08:33, 165.89ft  
Tap Break-In Defective at 3 o'clock, 4inch dim



1740\_50303b2d-e142-4060-966d-4505c76047c1\_20200731\_114924\_424.jpg, 00:08:47,  
165.89ft  
Roots Medium Connection from 2 o'clock to 4 o'clock, 5% lost



## Section Pictures - 7/31/2020 - 1740

City	Street	Date	Pipe Segment Reference	Nr.
Montrose	114 Vista View	7/31/2020	1740	4



1740\_e6c8afd0-1eb7-4964-936e-167ff9fbae09\_20200731\_115146\_314.jpg, 00:11:09, 222.95ft  
Tap Break-In Defective at 10 o'clock, 4inch dim



1740\_dc919156-5063-46a6-aa2f-73c7b2333f3f\_20200731\_115214\_428.jpg, 00:11:09, 222.95ft  
Tap Break-In Defective at 10 o'clock, 4inch dim





## Section Pictures - 7/31/2020 - 1740

City	Street	Date	Pipe Segment Reference	Nr.
Montrose	114 Vista View	7/31/2020	1740	4



1740\_27860731-f72f-46f4-9e8a-c8545b8c2357\_20200731\_115203\_925.jpg, 00:11:26, 222.95ft  
Roots Medium Connection from 9 o'clock to 12 o'clock, 10% lost



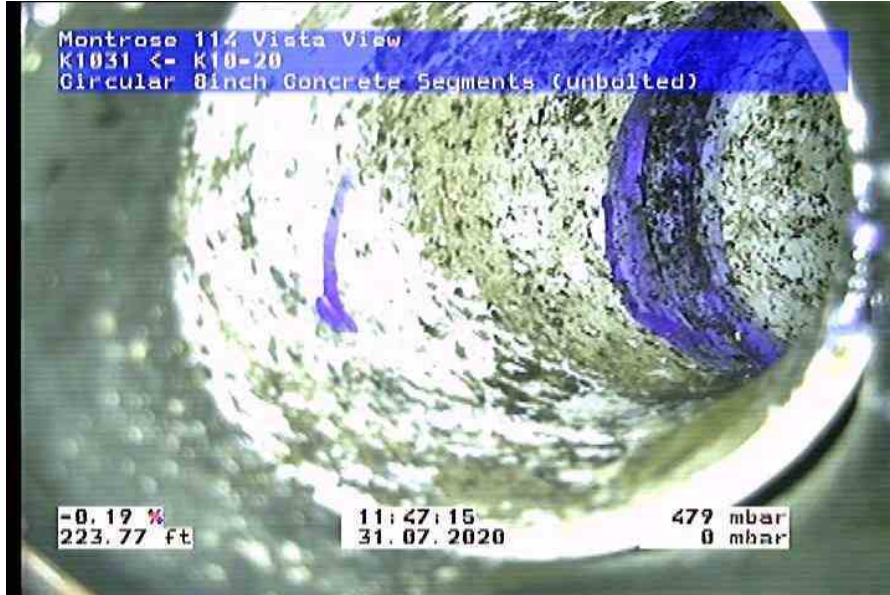
1740\_daf8c50f-a101-4076-9400-631a685e8c60\_20200731\_115231\_911.jpg, 00:11:54, 223.24ft  
Tap Saddle at 1 o'clock, 4inch dim



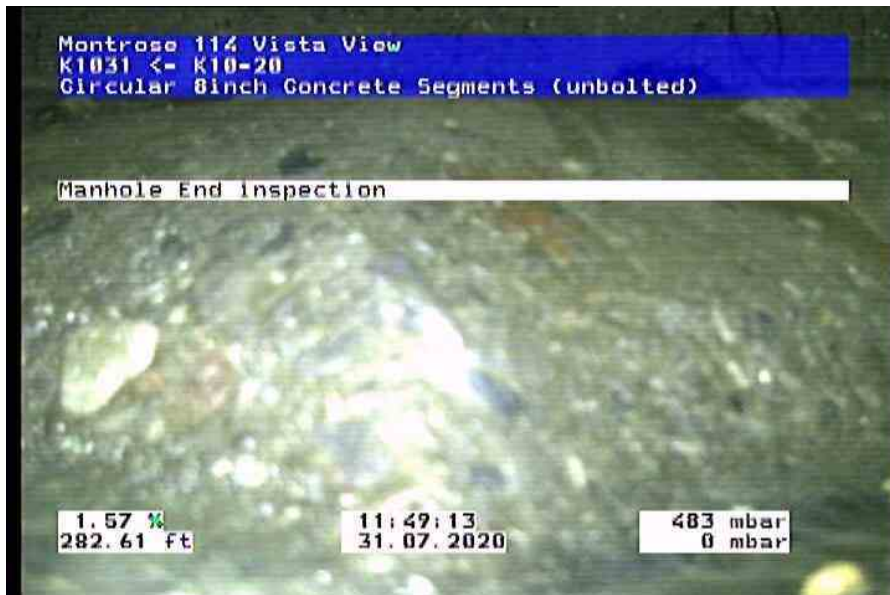


## Section Pictures - 7/31/2020 - 1740

City	Street	Date	Pipe Segment Reference	Nr.
Montrose	114 Vista View	7/31/2020	1740	4



1740\_a083c924-689f-42af-9f1c-9d1d270979f4\_20200731\_115240\_341.jpg, 00:11:54, 223.24ft  
Tap Saddle at 1 o'clock, 4inch dim



1740\_944e08c4-9650-478c-a130-b26e1a98165e\_20200731\_115438\_309.jpg, 00:14:00,  
282.61ft  
Manhole



## Section Inclination - 7/31/2020 - 1740

Pipe Segment Reference 1740	Date 7/31/2020	Time 12:00 AM	Surveyed By Thomas Whitby	City Montrose	Street 114 Vista View	Direction of Survey Upstream	Length Surveyed 282.67 m
Shape Circular	Height 8 mm	Width 8 mm	Upstream MH K10-31	Downstream MH K10-20	Start altitude	End altitude -0.074 m	Measured Inc -0.026 m

