

CITY OF MONTROSE

MONTHLY SALES, USE & EXCISE TAX REPORT

Date: February 10, 2015

Month	Retail Sales Tax 3.0%			Construction Use Tax 3.0%			Use & Auto Tax 3.0%		
	<i>Current Year 2014</i>	<i>Prior Year 2013</i>	<i>% of Increase/Decrease</i>	<i>Current Year 2014</i>	<i>Prior Year 2013</i>	<i>% of Increase/Decrease</i>	<i>Current Year 2014</i>	<i>Prior Year 2013</i>	<i>% of Increase/Decrease</i>
Jan	907,337	961,153	-5.6%	5,952	10,648	-44.1%	54,996	62,219	-11.6%
Feb	906,195	873,094	3.8%	13,784	368	3646%	54,819	75,817	-27.7%
Mar	1,039,748	1,044,492	-0.5%	18,620	23,333	-20%	48,130	56,215	-14.4%
Apr	969,707	908,139	6.8%	13,384	26,115	-49%	61,622	112,602	-45.3%
May	1,052,438	987,618	6.6%	11,696	10,091	16%	70,292	70,262	0.0%
June	1,154,902	1,099,021	5.1%	45,385	13,157	245%	54,520	159,146	-65.7%
July	1,153,183	1,080,590	6.7%	67,097	14,146	374%	62,458	88,198	-29.2%
Aug	1,086,281	1,057,927	2.7%	7,918	8,422	-6%	68,710	65,063	5.6%
Sept	1,096,560	1,019,514	7.6%	14,017	5,045	178%	78,231	61,878	26.4%
Oct	1,026,833	987,705	4.0%	23,917	14,366	66%	79,159	61,437	28.8%
Nov	1,017,319	992,152	2.5%	4,863	2,483	96%	58,117	52,466	10.8%
Dec	1,317,875	1,345,331	-2.0%	3,179	2,757	15%	74,310	65,476	13.5%
YTD Total	12,728,378	12,356,736	3.0%	229,812	130,931	75.5%	765,365	930,779	-17.8%

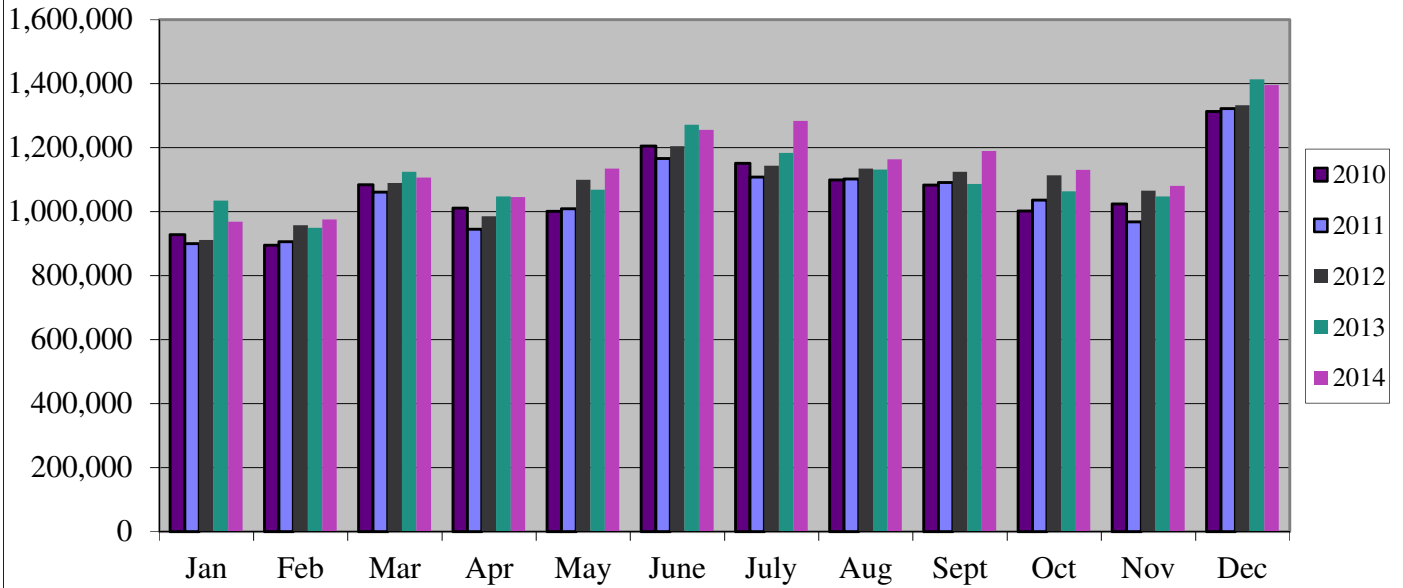
Month	Total Collected Sales and Use Tax			Sales and Use Budget		Montrose Recreation District 0.3%
	<i>Current Year 2014</i>	<i>Prior Year 2013</i>	<i>% of Increase/Decrease</i>	<i>Budget 2014</i>	<i>Budget Variance 2014</i>	<i>Current Year 2014</i>
Jan	968,285	1,034,020	-6.4%	1,023,080	-5.4%	
Feb	974,798	949,279	2.7%	933,443	4.4%	
Mar	1,106,498	1,124,040	-1.6%	1,116,184	-0.9%	
Apr	1,044,713	1,046,856	-0.2%	1,026,909	1.7%	
May	1,134,426	1,067,971	6.2%	1,087,611	4.3%	
June	1,254,807	1,271,324	-1.3%	1,239,484	1.2%	124,454
July	1,282,738	1,182,934	8.4%	1,166,768	9.9%	141,884
Aug	1,162,909	1,131,412	2.8%	1,119,458	3.9%	121,324
Sept	1,188,808	1,086,437	9.4%	1,074,650	10.6%	115,516
Oct	1,129,909	1,063,508	6.2%	1,053,143	7.3%	117,480
Nov	1,080,299	1,047,101	3.2%	944,511	14.4%	110,073
Dec	1,395,364	1,413,564	-1.3%	1,385,176	0.7%	139,737
YTD Total	13,723,555	13,418,446	2.3%	13,170,417	4.2%	870,467

Month	Hotel Excise Tax 0.90%			Restaurant Excise Tax 0.80%			Total Collected Hotel & Restaurant Tax		
	<i>Current Year 2014</i>	<i>Prior Year 2013</i>	<i>% of Increase/ Decrease</i>	<i>Current Year 2014</i>	<i>Prior Year 2013</i>	<i>% of Increase/ Decrease</i>	<i>Current Year 2014</i>	<i>Prior Year 2013</i>	<i>% of Increase/ Decrease</i>
Jan	3,070	3,559	-13.7%	22,947	21,438	7.0%	26,017	24,997	4.1%
Feb	3,594	3,293	9.1%	23,423	22,299	5.0%	27,017	25,592	5.6%
Mar	4,249	3,814	11.4%	26,924	26,946	-0.1%	31,173	30,760	1.3%
Apr	4,408	4,090	7.8%	25,141	23,058	9.0%	29,549	27,148	8.8%
May	6,297	6,578	-4.3%	28,714	27,463	4.6%	35,011	34,041	2.8%
June	9,670	9,329	3.7%	29,962	27,950	7.2%	39,632	37,279	6.3%
July	11,953	12,457	-4.0%	31,027	31,251	-0.7%	42,980	43,708	-1.7%
Aug	9,994	10,143	-1.5%	29,326	31,779	-7.7%	39,320	41,922	-6.2%
Sept	10,919	9,323	17.1%	28,859	26,519	8.8%	39,778	35,842	11.0%
Oct	7,166	5,601	27.9%	27,251	24,706	10.3%	34,417	30,307	13.6%
Nov	3,727	3,474	7.3%	25,104	22,135	13.4%	28,831	25,609	12.6%
Dec	3,338	3,212	3.9%	25,639	24,018	6.7%	28,977	27,230	6.4%
YTD	78,385	74,873	4.7%	324,317	309,562	4.8%	402,702	384,435	4.8%

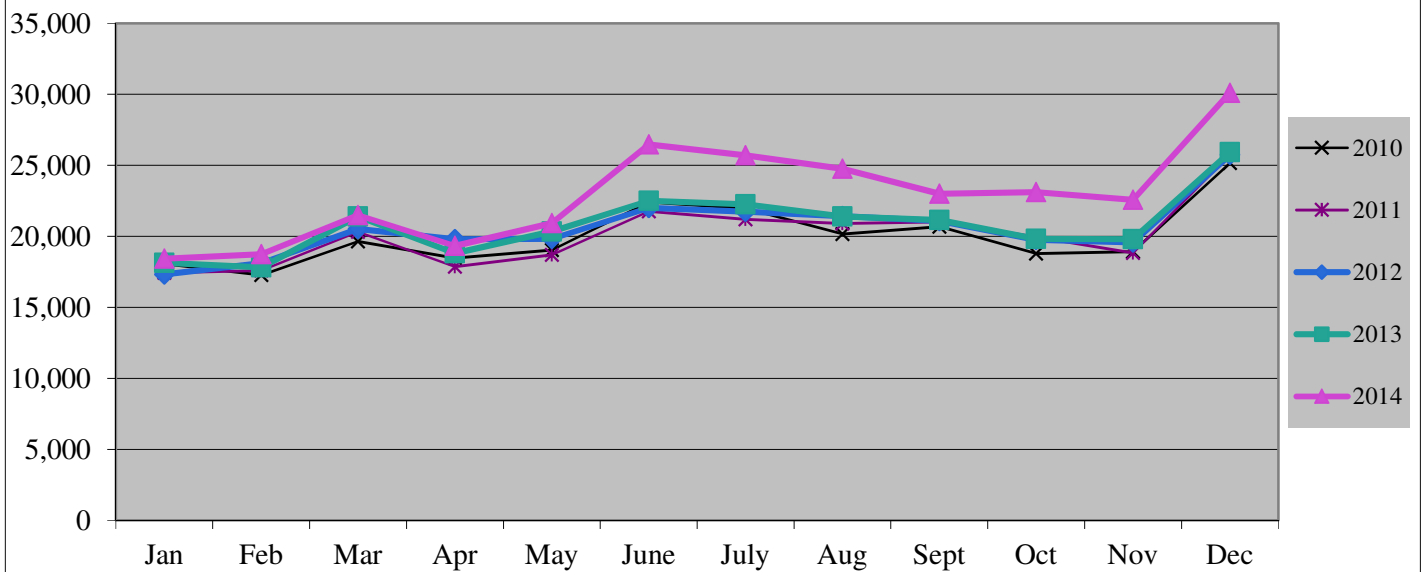
Hotel & Rest. Budget		
Month	<i>Budget</i>	<i>Budget Variance</i>
	<i>2014</i>	<i>2014</i>
Jan	22,788	14.2%
Feb	23,293	16.0%
Mar	27,982	11.4%
Apr	24,773	19.3%
May	31,217	12.2%
June	34,237	15.8%
July	40,508	6.1%
Aug	38,661	1.7%
Sept	33,123	20.1%
Oct	27,765	24.0%
Nov	23,332	23.6%
Dec	22,321	29.8%
YTD	350,000	15.1%

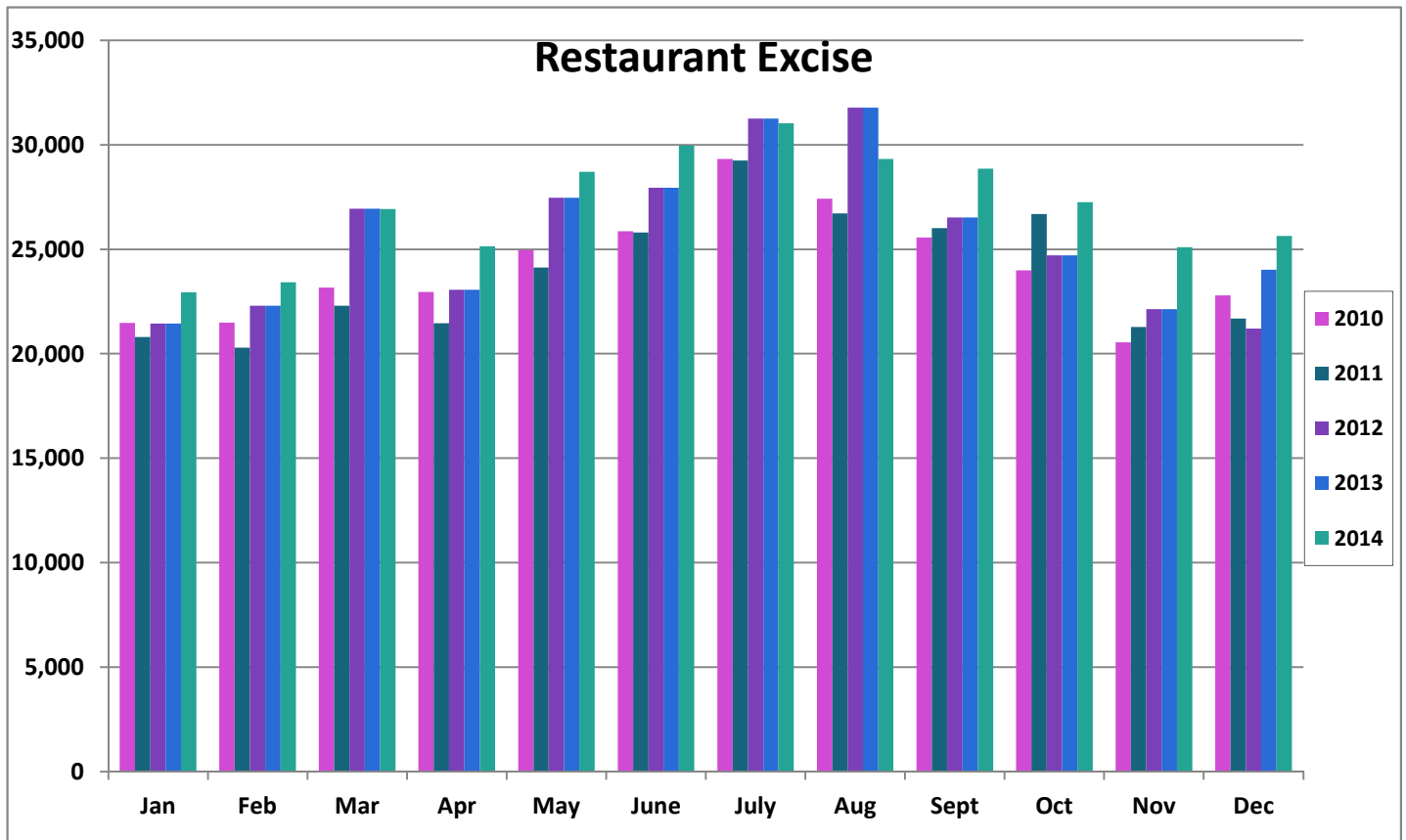
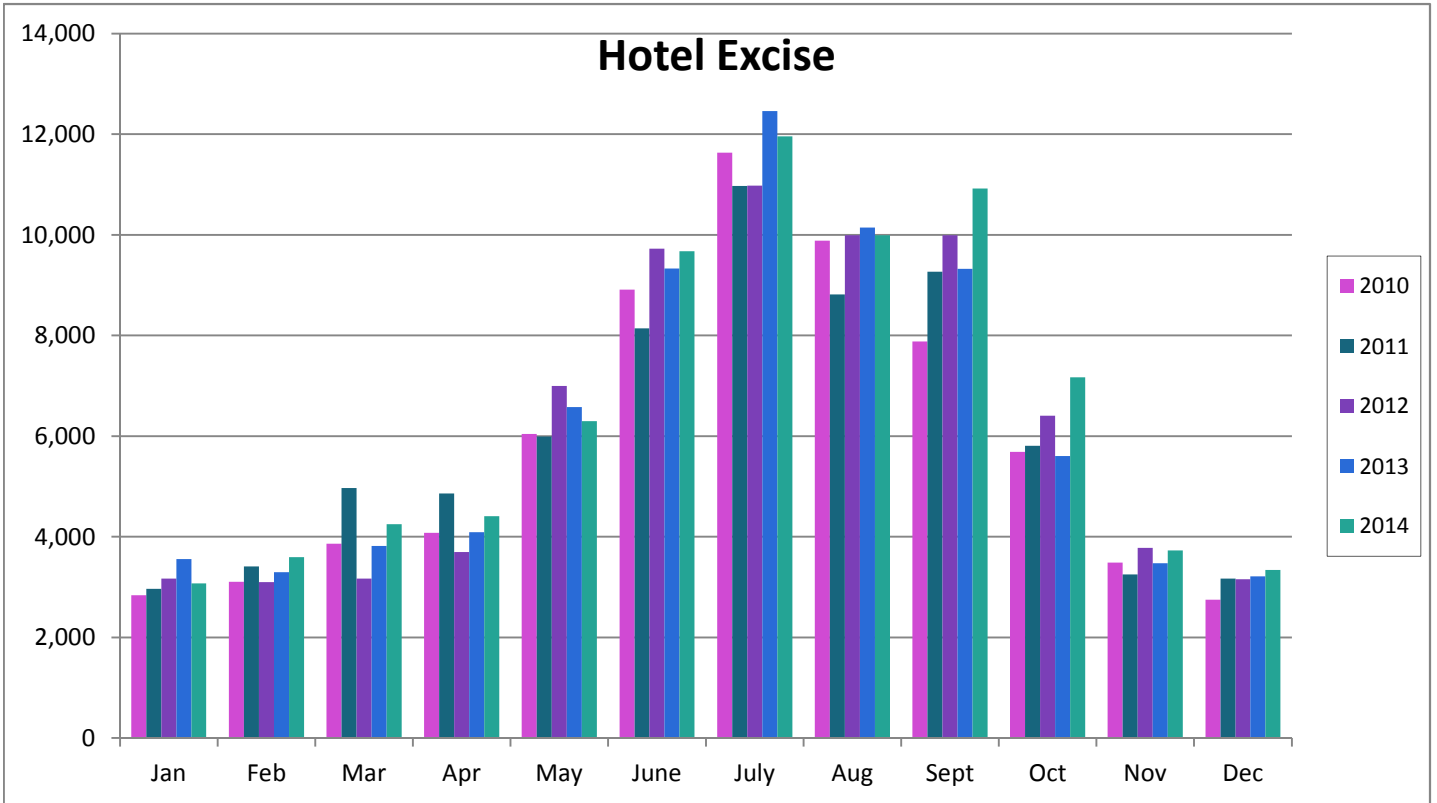
Retail Enhancement Program		
Current Year 2014	Prior Year 2013	<i>% of Increase/ Decrease</i>
		<i>2014</i>
18,421	18,135	1.6%
18,734	17,814	5.2%
21,477	21,388	0.4%
19,335	18,814	2.8%
20,929	20,338	2.9%
26,458	22,502	17.6%
25,702	22,260	15.5%
24,745	21,406	15.6%
22,986	21,149	8.7%
23,117	19,819	16.6%
22,576	19,807	14.0%
30,103	25,925	16.1%
274,583	249,357	10.1%

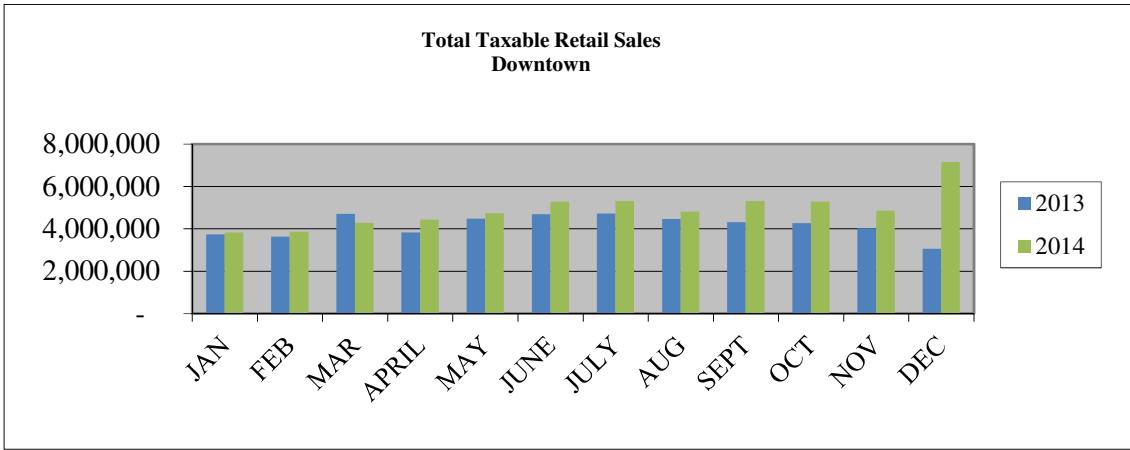
TOTAL CITY SALES & USE TAX



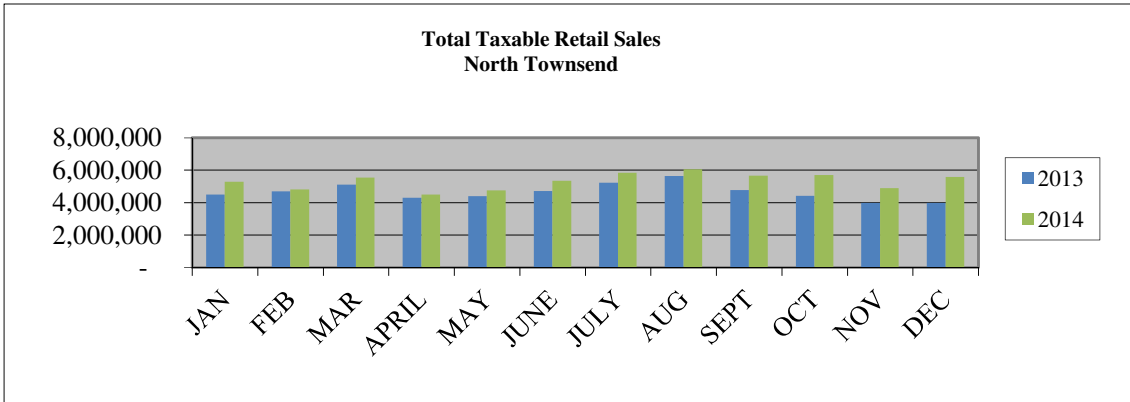
Retail Enhancement Program



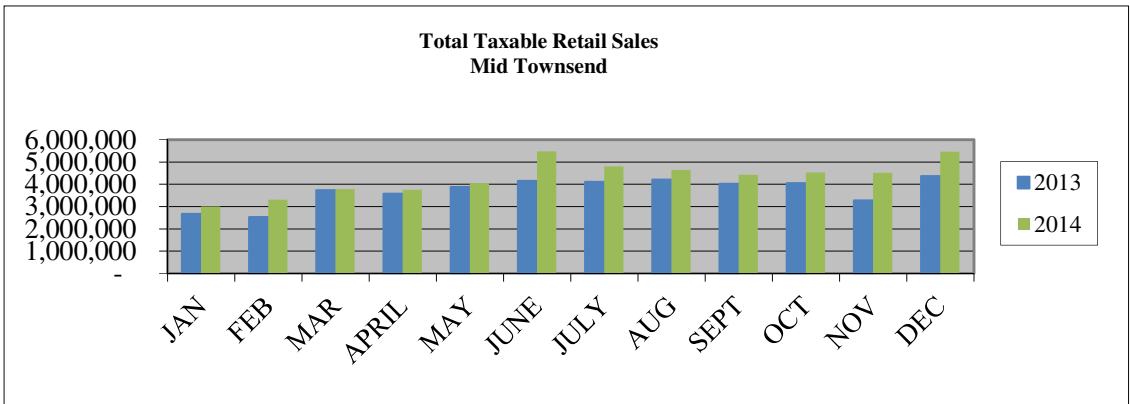




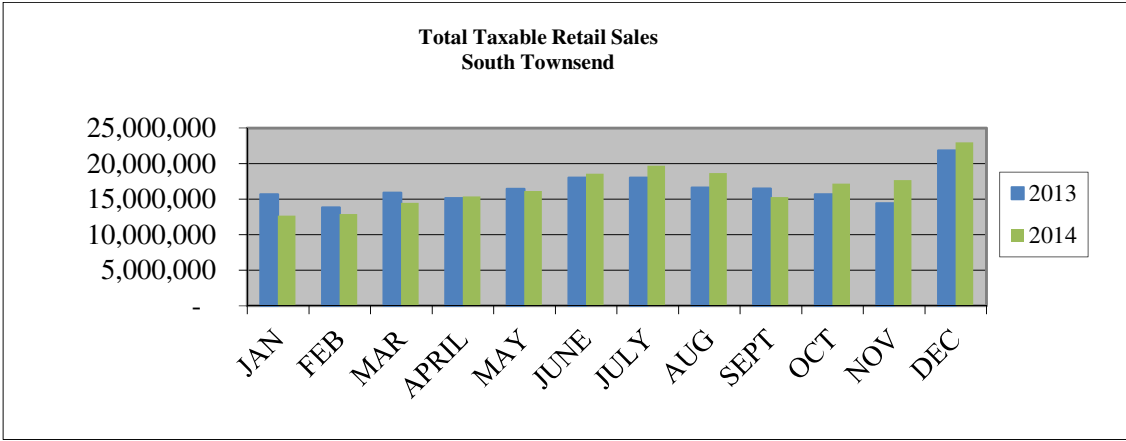
AREA 1: 2011=DDA BOUNDARY



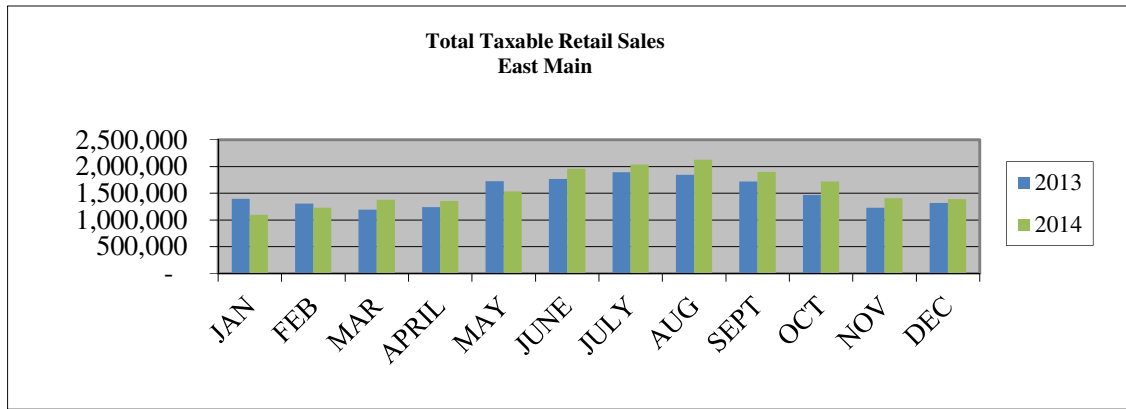
AREA 2: *NORTH CITY LIMIT TO NORTH 2ND STREET



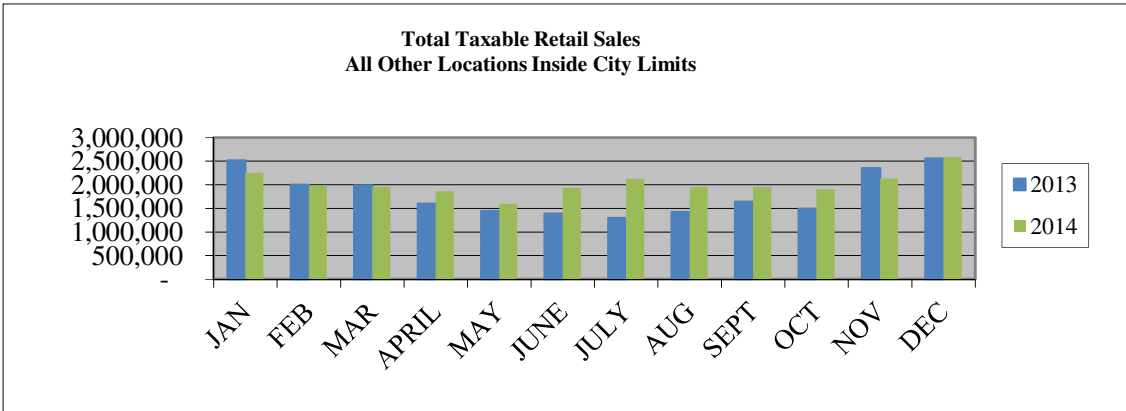
AREA 3: MID TOWNSEND SOUTH 2ND STREET TO E OAK GROVE RD



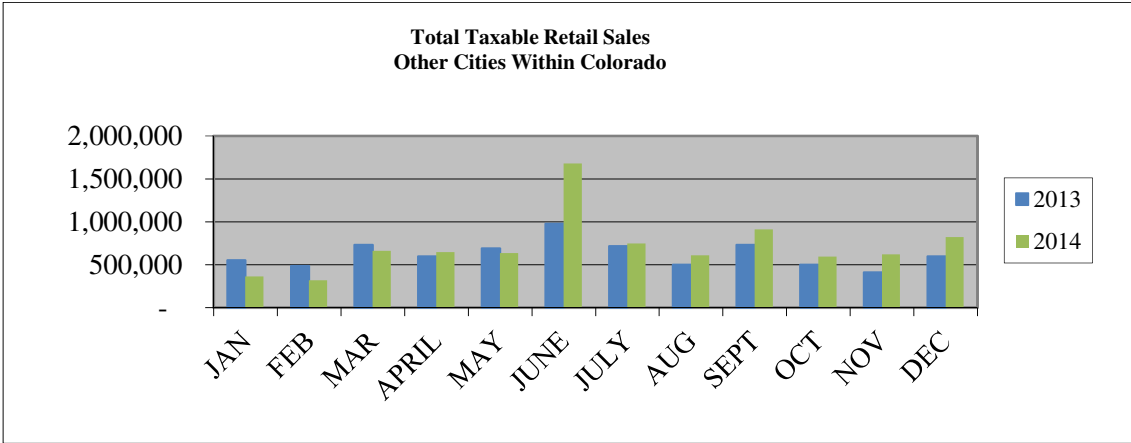
AREA 4: SOUTH TOWNSEND E OAK GROVE RD TO SOUTH CITY LIMIT



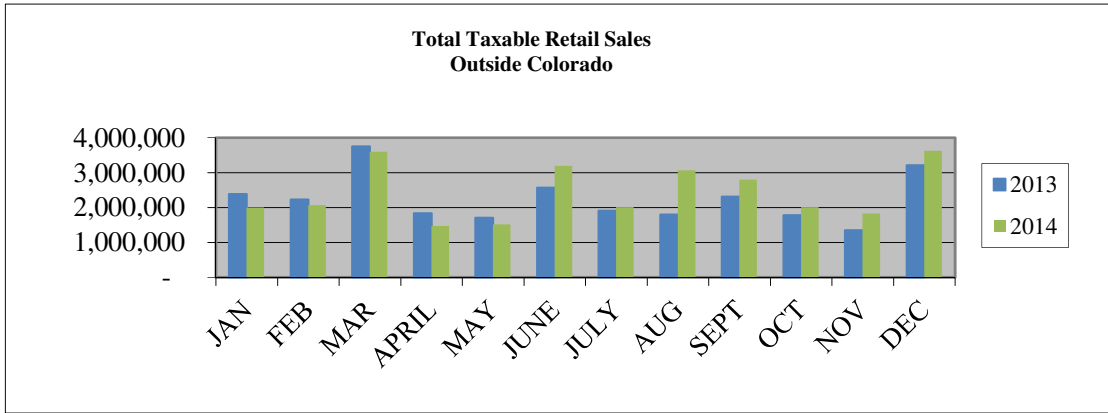
AREA 5: EAST MAIN LOT AVENUE TO EAST CITY LIMIT



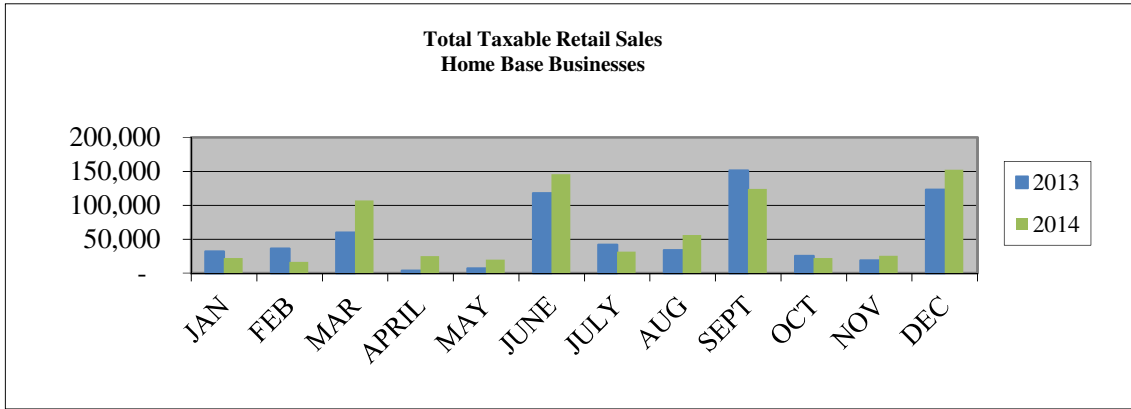
AREA 6: ALL OTHER LOCATIONS INSIDE CITY LIMITS OF MONTROSE



AREA 7: OTHER CITIES WITHIN COLORADO



AREA 8: OUTSIDE COLORADO



AREA 9: HOME BASE BUSINESSES