



**REGULAR WORK SESSION  
TUESDAY, MARCH 5, 2013  
5:00 P.M. IN THE CITY COUNCIL CHAMBERS  
Located in the Elks Civic Building  
107 South Cascade Avenue**

- 1) GENERAL CITY COUNCIL DISCUSSION (30 minutes)
  
- 3) DISCUSSION ITEMS AND REPORTS
  - A. Region 10 Report (20 minutes) **2-13**  
(Region 10 Executive Director Michelle Haynes)
  
  - B. Great Outdoors Colorado (GOCO) School Play Yard Grant (20 minutes) **14-31**  
(Grant Coordinator Janet Freed)
  
  - C. Cemetery Sprinkler Automation Project (20 minutes)  
(Public Works Director John Harris)
  
  - D. Colorado City and County Management Association Conference Highlights (20 minutes)  
(City Manager Bill Bell and Assistant City Manager Rob Joseph)

**\*\*FUTURE TOPICS\*\***

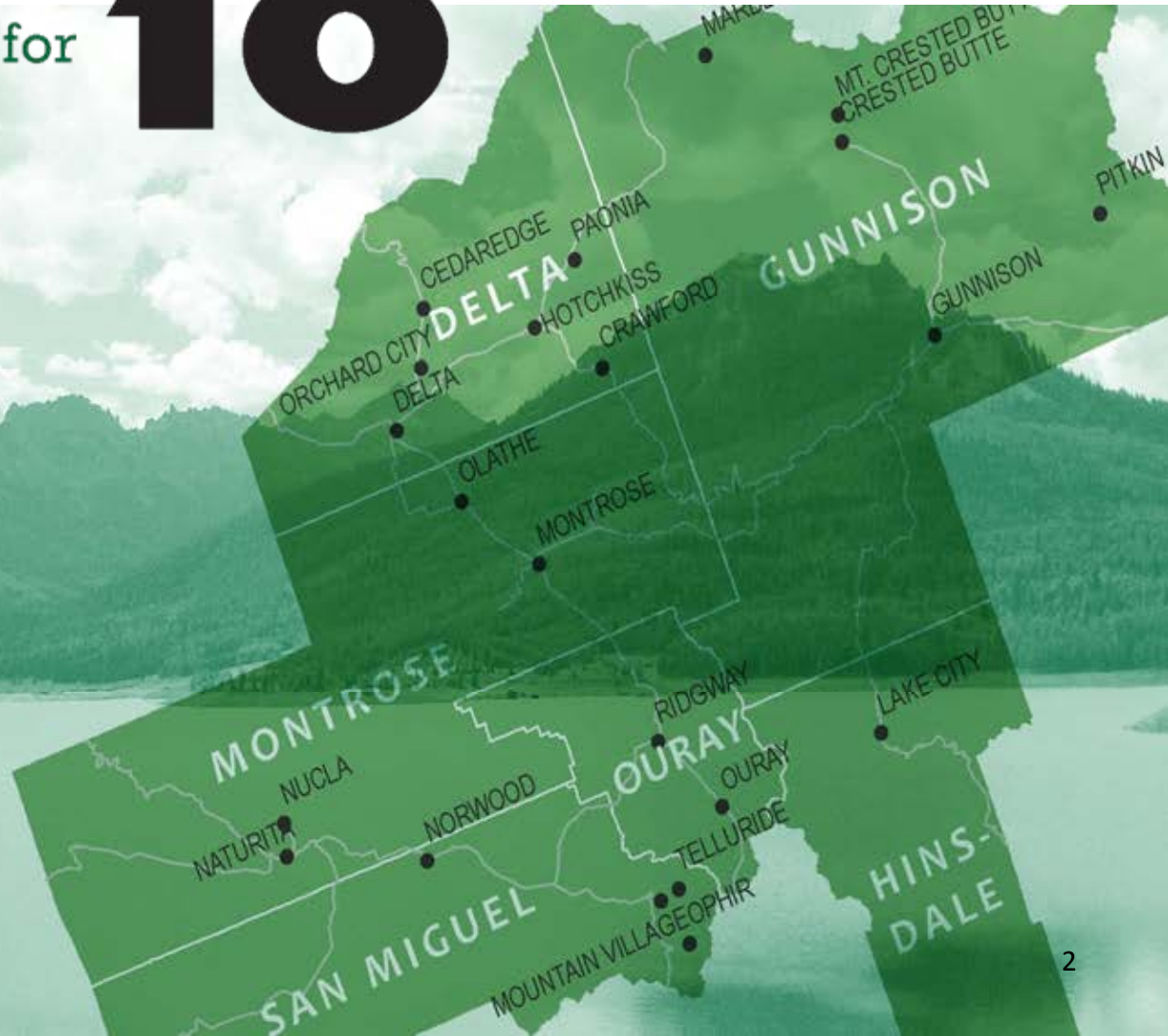
The following is a list of items City Council may consider in the near future. Please keep in mind these items may change and are not necessarily scheduled for the next City Council Work Session. If there is a particular item that you are interested in we recommend reviewing the City Council Work Session meeting agendas and packets on-line at the City of Montrose website, [www.cityofmontrose.org](http://www.cityofmontrose.org).

- Rural Philanthropy Days Presentation – March 19
- Great Colorado Adventures Presentation – March 19
- Montrose County Housing Authority Presentation – March 19
- New Brew Pub Liquor License Application for Horsefly Brewing Company – March 19
- Election of Mayor and Mayor Pro Tem – April 2
- Earth Week Proclamation – April 16
- Arbor Day Proclamation – April 16
- Quarterly Code Enforcement Report
- 3.2 Beer License Renewal for Pizza Hut

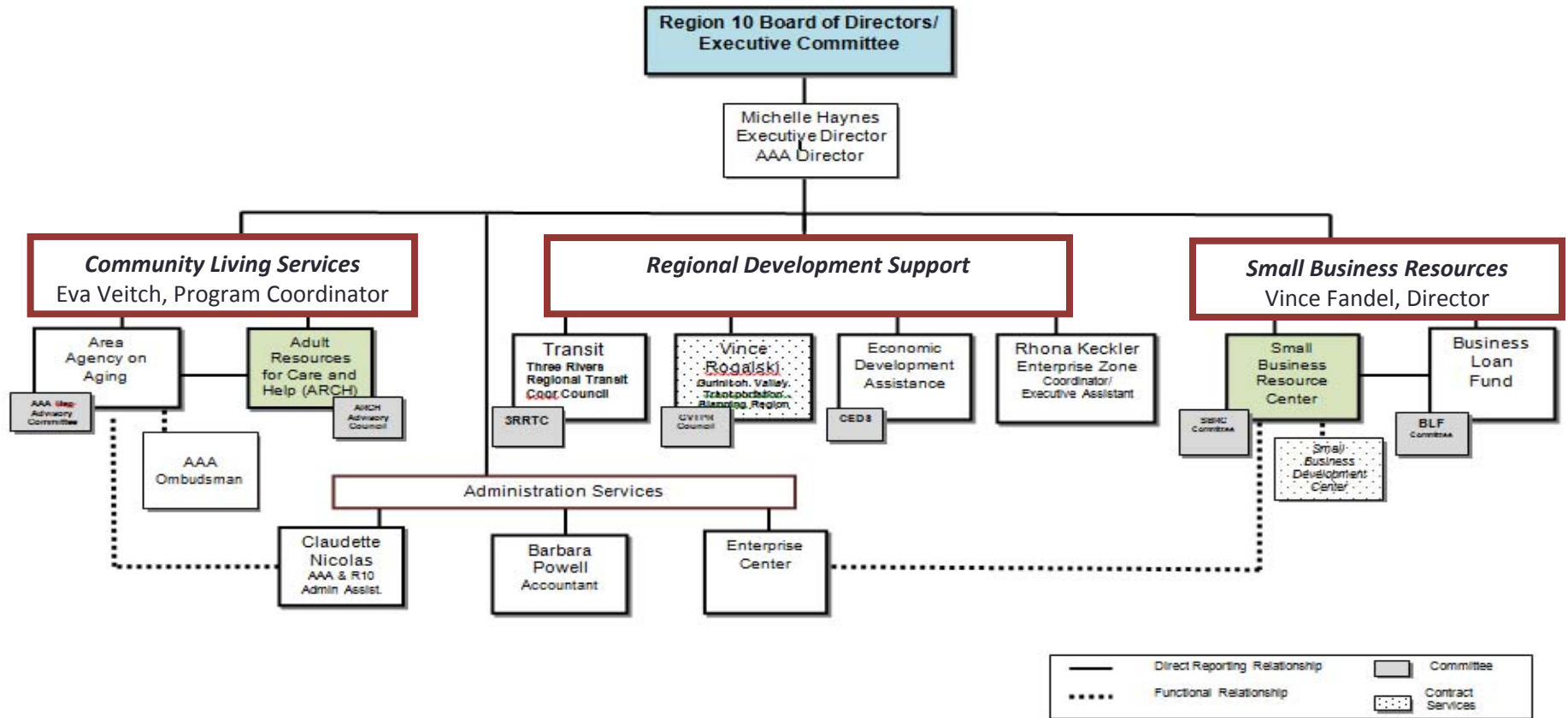
# REGION

Leveraging Resources for  
Stronger Communities

# 10



# Revised Organization Chart



# Regional Development Support

## Comprehensive Economic Development Strategy

Regional Collaboration for Development Support

### Current Activities

OEDIT Blueprint

CEDS Committee

### Vision for 2013

Regional Plan

Local Plan-\$5,000 Member Mini-Grants

Sector Development



City Of Montrose

- Member Grant
- Sector/Workforce Development
- Blueprint-Local Business & Opportunities
- Data Resources

# Regional Development Support

## Gunnison Valley Transportation Planning Region

Responsible for multi-modal planning of transportation within Region 10's six counties in conjunction with CDOT

### Current Activities

Black Hill Stage Gunnison to Denver route  
SUCAP Durango to GJ route (stop @ Montrose)

### Vision for 2013

Revision of 2040 Plan  
Transportation ---- Transit  
Connect 2 Dot ---- SBDC



# Regional Development Support

## Three Rivers Regional Transit Coordinating Council

Coordinating Regional Transit Councils

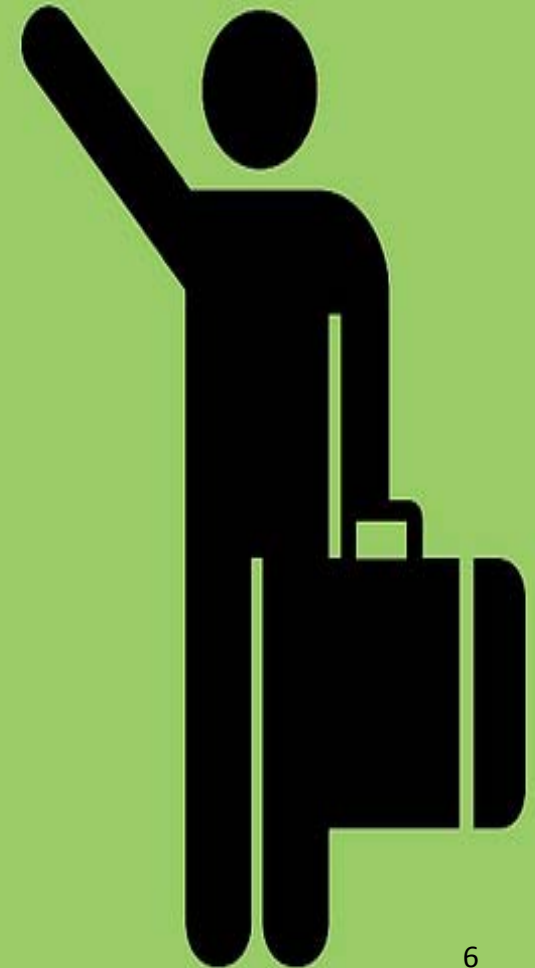
### Current Activities

Completion of Transit Study

### Vision for 2013

Implementation Grant funding

AAA Waitlist/ARCH Services



# Regional Development Support

## Enterprise Zone Business Tax Credit Program

Tax incentives to encourage new and existing businesses to expand in designated Enterprise Zone areas of the state

### Current Activities (CY2013)

Investments of \$119 million  
Credits of \$2 million  
Investments of \$119 million

### Vision for 2013

Increase community visibility with marketing campaign  
Monitor new legislation (HB1142)



### Montrose County

- Investment of \$24,168,969
- Tax Credits of \$562,807
- New Jobs = 121

# Regional Development Support

## Enterprise Zone Contribution Project

Encourages donations to projects conducted by non-profit organizations

### Current Activities (CY2013)

5 projects added

3 projects proposed

### Vision for 2013

Increase community visibility by increasing staff time dedicated to public relations and community outreach



### Montrose Projects Include:

- Hospice & Palliative Care
- TMRAO
- Main in Motion
- MEDC
- CMU-Montrose
- Others



# Small Business Resources

## Business Loan Fund

Provides financial options for small businesses

### Current Activities

All loans within the loan fund portfolio are paid as agreed through February 2013

Second SBA loan available

### Vision for 2013

Work with community partners and local banks to leverage resources

Grow loan fund to increase future revenues



Montrose Investment  
2011-2013

- 22 Loans for New Businesses and Business Expansion
- Over \$1.1 million

# Small Business Resources

## Small Business Resource Center

An educational center focusing on supporting new and existing small businesses with their basic needs

### Current Activities

Work with SBRC to maximize resources

Advisory group meetings held to discuss future goals

Begin campaign to identify needs and available resources

### Vision for 2013

Become satellite office of the SBRC

Offer classes and follow-up support for beginning and existing businesses



- Sponsor for Entrepreneurship Day
- Collaboration with City of Montrose

# Small Business Resources

## The Enterprise Center

Office and business support for new businesses and non-profits

### Current Activities

One vacant office

98% leased

Property tax exemption

### Vision for 2013

Increase business services

Evaluate leasing strategies



- 14 Tenants
- 5 Small Business Owners
- 9 Non-Profit Organizations

# Community Living Services

## Area Agency on Aging

Programs and services that help older adults maintain their dignity, health and independence in their respective communities.

### Current Activities

Provide services for nutrition, transportation, homemaking, legal aid, caregiver support, legal aid and information and assistance

Partnered with CFI to provide Matter of Balance

Developed material aid program

### Vision for 2013

Improve Program Efficiencies

Develop senior companion program

Increase consumer choice through vouchers



Montrose County FY 12

- Transit Rides = 17,803
- Congregate Meals Served = 23,407
- Home Delivered Meals Served = 26,004
- Homemaker/Respite Hours = 3,157
- Other (Legal, Ombudsman, Dental, Etc) = 328

# Community Living Services

## Adult Resources for Care and Help



Long-term services and support for adults 18+

### Current Activities

Increasing population of focus to include younger disabled

Received startup grant from State Unit on Aging

Hired ARCH Program Coordinator

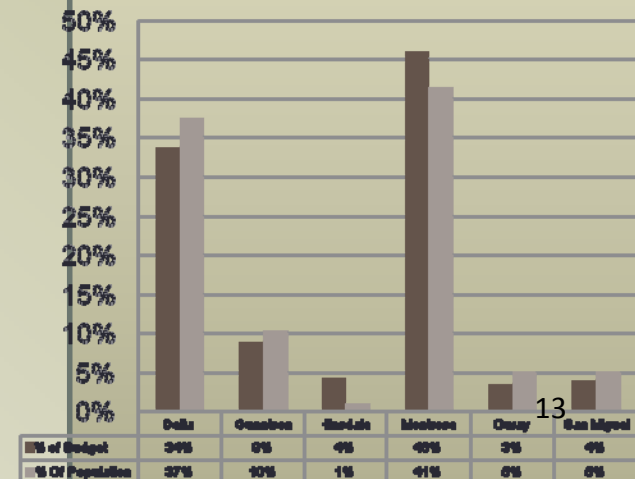
### Vision for 2013

Provide options counseling and case management services to target population

Develop collaborative relationships with ARCH stakeholders



FY 12 AAA Service % Distribution Compared to % Population over 80



## Section 2 – Application – Summary Form

### ABOUT THE APPLICANT/ LOCAL GOVERNMENT

Name: City of Montrose		
Mailing Address: P.O. Box 790, Montrose, CO 81402		
Applicant Contact Name: Janet Freed		Title: Grant Coordinator
Telephone: 970-240-1457	Email: jfreed@ci.montrose.co.us	Are you the primary contact for this grant: <input type="checkbox"/> YES <input checked="" type="checkbox"/> NO

### ABOUT THE PARTNER / SCHOOL

Name: Montrose County School District RE-1J		
Mailing Address: P.O. Box 10,000, Montrose, CO 81402		
Partner Contact Name: Mindy Baumgardner		Title: Communication & Special Project Coordinator
Telephone: 970-252-7901	Email: mbaumgardner@mcsd.k12.co.us	Are you the primary contact for this grant: <input checked="" type="checkbox"/> YES <input type="checkbox"/> NO

### ABOUT THE PROJECT

Project Title: Northside Navigators Play Yard	
Grant Request (not to exceed \$100,000): \$100,000	Total Project Cost:
Percent of overall match (% of total project cost):	Percent of cash match (% of total project cost):
County of Service: Montrose	City (location of project, including cross streets): 528 N. Uncompahgre Ave., Montrose
<p>Brief Project Description (In 250 words or less, answer the questions below):</p> <p>The proposed project is to improve and enhance the existing play yard at Northside Elementary School located in Montrose, Colorado. This project will be one of two phases. The first Phase I includes adding play equipment (Pirate Ship, Sand Box, New Swing Structure) and removing existing play equipments (25 year old swing structure, dome climber, monkey bars), and resurfacing two of the three play areas. Pouring concrete around the entire play yard for ADA accessibility, additional court space</p>	

## Section 2 – Application – Summary Form

and painting, 1/8 mile jogging track around court area and two entrances at the north and south side of the play yard with signage. The second phase will include outdoor learning classrooms, community/school gardens, shade areas and an additional ¼ mile jogging track. The project is needed as the existing play yard poses serious safety issues as well as limiting access for all students. The NES Navigator project will improve the recreation opportunities for NES students and the greater community in three ways:

1. Increased access for all students, including those in wheelchairs and with special needs, to participate in recreational activities.
2. Creates an environment that is fun and inviting.
3. Offers a variety of recreational activities to choose from for people of all ages.
4. Promotes outdoor, unstructured play.

The park will benefit the 374 students that attend Northside Elementary; Northside Child Health Clinic; Step-Up-To Life Program, Cooperative Board of Home Schools, area day care centers and the greater community.

### APPLICATION CHECKLIST

Verify that this application contains all of the following required documents:

- Signed Resolution from Governing Body
- Signed Letter of Support from School and School District
- Intergovernmental/MOU/Joint Use Agreement
- Preliminary Timeline Estimate
- Budget Form

## Section 2 – Application – Summary Form

- Response to Selection Criteria Questions (a narrative provided on your own paper)
- Attachments to Selection Criteria:
  - Map(s) identifying the project location (Using Google Earth or Google Maps)
  - Site map
  - Photos of existing amenities to be replaced, if applicable
  - Letters of support
  - Letter from school facilities manager

**Authorized Local Government Signature:** \_\_\_\_\_ **Date:** \_\_\_\_\_

Printed Name and Title: \_\_\_\_\_

By signing below, the School District certifies that it owns, leases, or otherwise has control over the property on which this project will be completed (collectively, “Control”) and will do so for the next 25 years. School District has on file documentation evidencing its Control of the property and will provide such documentation to GOCO on request.

**Authorized School Signature:** \_\_\_\_\_ **Date:** \_\_\_\_\_

Printed Name and Title: \_\_\_\_\_



---

### Question #1

The Northside Navigator Playground Project will serve Northside Elementary School (NES) in Montrose, Colorado and the surrounding community. Northside Elementary is one of six elementary schools within Montrose County School District RE-1J serving students K-5. Montrose County School District (MCSD) is a rural school district located in west-central Colorado serving 6,183 students that reside in Montrose County excluding students that reside in Nucla and Naturita. Those students are served by the RE-2 Montrose School District. Most students in the school district's attendance area live in the City of Montrose or the Town of Olathe. The City of Montrose is approximately 298 miles southwest of Denver, Colorado. NES is located in the City of Montrose on the north side of town, hence the name "Northside". Current enrollment for the 2012-2013 School Year at NES is 374 Students. Of those 374 students, 85% or 318 students qualify for free or reduced lunch program.

The student body at NES is unique as compared to the other elementary schools in the District as NES has the highest number of students (85%) qualifying for free or reduced lunch program compared to that of the District at 57%. NES has the highest number of Hispanic students as compared to White. The Hispanic population is in the majority with 61% of the student body as compared to 35% White. NES also has the second highest number of Special Education Students amongst the six elementary schools in the District with 60 students receiving some type of special educational services. Of those 60 students twelve or 20% have severe disabilities. These disabilities include autism, Down's syndrome, along with physical and motor impairments. While there are only two students that rely on wheelchairs for mobility, several student have motor impairments that make it difficult to move around and access the existing play yard. The school is unique in that diversity is welcomed and celebrated. Northside prides itself on having a positive relationship with students and families.

The greater community/neighborhood that the project will serve is approximately 21.7% of the City of Montrose's population. The total population for the City of Montrose is 19,132 with 4,156 living within the boundaries of NES. The median income for the neighborhood the project will serve is \$24,555 compared to median income of \$44,763 for the City of Montrose (Appendix A).

The existing recreational amenities available to the community being served by the project include but are not limited to: existing NES play yard/soccer field, Buckley City Park, which is located five city blocks southeast from NES, La Raza Park, four city blocks west of NES, and a bike path .3 miles from the proposed project site. The parks include amenities such as swings, slides, grassy field areas, climbing structures and picnic areas. According to Montrose Recreation District Director, Ken Sherbenou, NES students have the lowest participation rate in recreational activities offered by Montrose Recreation District, probably

---

because Northside serves many low-income families that cannot afford to pay for their kids to participate.

The role NES plays in providing recreational opportunities for the community/neighborhood is through both indoor and outdoor facility use from various community organizations. During the 2011-2012 School Year NES facilities were utilized over 226 hours for recreation opportunities by the following community groups: Montrose Recreation District Tae Kwon Do Class, Girls Scouts, Indoor Soccer Club and the Girls on the Run program. The onsite school based health center, Northside Children Health Center (NCHC), also utilizes the existing playground and field for its Afterschool Education/Fitness Camp and during the summer for the week long Summer Healthy Kids Camp. It is not uncommon to catch a neighborhood soccer match on the existing soccer field during the weekends or summer evenings.

### **Question #2**

Users will access the school play yard in two ways. Students will access the school play yard while school is in session through the doors located on the west side of the building. The greater community will be able to access the school play yard through the main entrance on the southwest side of the play yard off of North 5<sup>th</sup> Street and Cascade through a gated entrance on North 6<sup>th</sup> and Cascade ( See Appendix B for Site Map). Community access will not be available when school is in session for safety reasons. The school play yard will be available from 4:00 pm – dusk on school days and from 8:00 am – dusk when school is not in session.

A parking lot, serving NCHC exists at the main entrance of the play yard where motorized visitors can park to access the play yard. Non-motorized visitors can access the play yard during open times via sidewalks and crosswalks. There are sidewalks on the north side of the NES and crosswalks at every intersection. While the City of Montrose invested \$16,902.50 on sidewalk/handicapped-accessible curb ramp work near Northside in the fall of 2010 there are still some obstacles to getting to the project site as there are no sidewalks on the south side of the school or on the adjacent side of the street. The School District and the City of Montrose, who have partnered on two previous Safe Routes to School (SRTS) projects, intend to seek a SRTS grant to improve sidewalks and handicap accessible curb ramps accessing the school in the near future. Until then, the project can be accessed by walking on the south side of the school property which is surfaced with grass or visitors can enter through a smaller entry way on the north side of the project where there are sidewalks and handicapped-accessible curb ramps.

NES is in close proximity to the neighborhoods/communities it will serve. The original NES facility was built in 1969 and is nestled in an older established neighborhood. Of the 374 students that attend NES, 129 students live within one mile of the play yard project (Appendix C).

---

The project is located on the west side of the school building. The school building is surrounded by residential houses on the north, east and south side of the property, and commercial buildings make-up the remainder on the west side of the property. The project is three blocks off of Highway 50/Townsend Ave (Appendix D)

### **Question #3**

The scope and of the NES Navigator Project is intended to enhance and/or replace most of the existing facilities. Safety concerns in regards to outdated equipment and limited access for our severe needs student both pose concerns with the current design. Some of the equipment, specifically one of the swing sets is over 25 years old (Appendix E). Other concerns in regards to the existing play yard identified by Learning Landscapes include the following: four square area overlaps the basketball court, swing areas overlapping, sheds blocking visibility to bus drop off, dome climber not safe-limits access to student if they fall, monkey bars exceed safety height limits, play area exposed to elements with minimal shade areas The existing surface of pea gravel is not only a safety concern but limits access to the existing play yard for our students with mobility impairments. While great efforts have been made by the schools Playground Improvement Group (PIG) in planting trees, attempting to grow additional grassy areas, purchasing equipment, there is still room for enhancements. The equipment and play yard got into the condition they're in through simple wear and tear and the lack of funding to make improvements, it was not because of lack of effort or maintenance. According to the students participating on the NES Play Yard Task force there is not enough equipment in their current play yard for all children to play- which limits exercise, there is "nothing to do" and the rocks are boring. They would like to see some color added to the play yard and additional equipment that can be accessed by all.

The scope of the proposed project for Phase I includes adding play equipment (Pirate Ship, Sand Box, New Swing Structure) and removing existing play equipments (25 year old swing structure, dome climber, monkey bars), and resurfacing two of the three play areas. Pouring concrete around the entire play yard for ADA accessibility, additional court space and painting, 1/8 mile jogging track around court area and two entrances at the north and south side of the play yard with signage (Appendix F).

### **Question #4-**

The NES Navigator project will improve the recreation opportunities for NES students and the greater community in three ways:

5. Increased access for all students, including those in wheelchairs and with special needs, to participate in recreational activities.
6. Creates an environment that is fun and inviting.
7. Offers a variety of recreational activities to choose from for people of all ages.
8. Promotes outdoor, unstructured play.

The NES Navigator project will improve the recreation opportunities for NES students in a variety of ways. The greatest impact is that students would be safe playing in and around the new structures and designs. During recess times throughout the school day, students would be

---

more engaged in outdoor activities that would likely affect their physical health. Because there would be more of a variety of activities for children, there would be increased physical activity. The social-emotional well being of the students would also be impacted in that increased engagement in productive and healthy play would likely decrease altercations and bullying situations amongst students. An attractive playground that is accessible and safe for all students would have a greater sense of pride about their playground, school and possibly their education. Many of students live in depressed conditions and coming to school to enjoy the outdoors through thoughtful planning would communicate a great deal to students and families.

Throughout the school day and through school functions, students would access the play yard with a variety of opportunity. Existing programs would utilize the yard through physical education classes, Girls on the Run, Summer Healthy Kids Camp, and Power Hour (afterschool education/fitness camp). With a new play yard, many new opportunities would be created such as teachers taking classes outside for learning in our outdoor classroom, tending classroom gardens and hopefully enjoying vegetables from this work. Students' learning would be enhanced by having more opportunity for outdoor education and ownership of their school.

The greater Northside community would benefit greatly should the NES Navigator project come to fruition. Though presently used a great deal, the community would gather for Sunday afternoon soccer games, picnics, and other gatherings. A variety of programs in the immediate area would access the play yard. MCSD Step-Up-To Life transitional program for 18-21 year old students with moderate to severe cognitive needs have expressed an interest in caring for community gardens and fitness areas. The Cooperative Board of Home Schools would welcome the opportunity to access the yard for a variety of activities within their organization. There are several day cares in the area that would use the play yard after school hours and in the summer months. With two garden areas, the hope is that the community would tend these in summer months and feel welcome on the grounds as well as assist the school in enjoying and maintaining the yard. While most of the area around Northside is residential, there is little pride taken in the yards and outdoor spaces. It is the hope that a greater sense of pride and ownership will be contagious around the Northside community and residents will begin to enhance their own yards because of their access to the innovative and opportunity rich play yard at Northside.

Because the scope of the project far exceeds the funds that are available, the play yard has been designed in two possibly three phases. The second phase of the project includes an area for a community/school gardens, an outdoor classroom and an additional garden area surrounding the outdoor classroom providing a tranquil place for learning in nature. The components in the second phase will bring opportunities for environmental education. The gardens will provide the opportunity to provide experiential learning that enriches not only classroom lessons, but life lessons. The greater community will be invited to utilize the

---

gardens during the summer months, when school is not in session, as a collaborative effort between the greater community and NES. These gardens will provide the opportunity not only for strengthening the community but providing a local food source and contributing to the physical and mental health of those gardening.

The various opportunities the students will have to benefit from the play yard include but are not limited to: recess times; during class time for outdoor learning-such as navigational mapping, horticulture and/or biology; NCHC Afterschool Education/Fitness Camp; NCHC Summer Healthy Kids Camp; Girls on the Run, which meets for eleven weeks in the spring, two times a week, would greatly benefit from the proposed jogging track.; and during the times the play yard will be open to the greater community from 4:00 pm – dusk on school days and from 8:00 am – dusk when school is not in session.

The recreational and learning opportunities the play yard will create for the greater community including but not limited to families in the surrounding neighborhood, MCSD Step-Up-To Life transitional program for 18-21 year old students with moderate to severe cognitive needs, and the Cooperative Board of Home Schools will be the same as for the students. The play yard will provide the opportunity to increase access for all people regardless of age, ethnicity, and/or physical barriers. It will provide more activities to choose from for people of all ages and it will promote outdoor unstructured play.

100% of the greater community (19,132 resident of the City of Montrose) could benefit if they chose to utilize the play yard. Realistically, at a minimum, the 4,156 residents that live in NES boundary and the 129 students that live within one mile from the play yard would benefit from the project.

Users are compensating now for the lack of the project by accepting what the play yard currently has to offer and/or visiting the local city park which is located five city blocks southeast from NES. During school hours, there is little use of the playground outside of recess times as the playground offers few opportunities for activity. Although the playground is currently used frequently by the school and community, it is anticipated that use will be greatly increased when it is safe and accessibly for all.

#### **Question #5**

This project will complement our on-site school based health center, Northside Child Health Center. NCHC was founded in 2007 and currently serves all children 0-18 in Montrose County, targeting specifically the 6183 students attending Montrose County School District. The primary focus is on students that are uninsured or underinsured. NCHC provides comprehensive primary care, including medical, mental health, dental services and outreach. NCHC also facilitates three health education and physical activity camps during each year; Power Hour Camp weekly and three Healthy Kids camps for grades K-2 and 3-5 during the summer. This project, if awarded, would only enhance the programs offered by NCHC by

---

providing a space that would promote recreational and environmental education. The NCHC promotes child and family health through Body Mass Index measurement and analysis and a summer health education series directed to parents and staff. These services are all done on-site utilizing the clinic space, NES facilities and the current play yard area.

Body Mass Index information collected by the NCHC from NES students third through fifth grade students in 2010-2011 indicated that 19% of the students tested were overweight and 15% were considered to be obese (Appendix I) The NES Navigator project would enhance the existing play yard providing the opportunity for all students of all ages to participate as well as encouraging physical activities for the students and the greater community.

Montrose County was recently awarded a mobilization and planning grant from LiveWell for 2012-2013. The “Growing Healthy Communities” project is currently addressing policy and environmental barriers to healthy eating and active living in the neighboring towns of Montrose and Olathe. The project envisions an environment in which much of our food is sourced from our rich agricultural valley, and that this healthy food is available and affordable to all. Once completed, the NES Navigator play yard project will provide space for active living and an opportunity for community members to grow healthy affordable foods in the community gardens. The LiveWell organization has expressed interest in helping fund gardens in Phase II.

There is a school wellness policy in place that covers the entire MCSD. In 2008, the school district adopted “the toughest Wellness Policy in the state” according to Kathy Deltonto, MCSD Nutritional Services Director. The policy promotes healthy schools by supporting student wellness, good nutrition, and regular physical activity as part of the total learning environment. Schools contribute to the basic health status of students by facilitating learning through the support and promotion of good nutrition and physical activity. MCSD believes that improved health optimizes student performance potential, as children who eat well-balanced meals and are healthy are more likely to learn in the classroom. The NES Navigator Play Yard project would promote good nutrition with the community/school gardens and increase physical activity with the addition of equipment, court games and jogging track.

### **Question #6**

MCSD contracted with Learning Landscapes, a UC-Denver program in which graduate students assisted the District in the planning and design of the school play yard. Students participated in the planning and design of the project in two specific ways. 1.) Active members of the NES Play yard Taskforce and 2.) Student Photo Survey taken by all 374 students (Appendix F). Four NES students actively participated on the NES Play Yard Taskforce. The students, Brady, Emma, Daniel and Juan attended and participated in three taskforce meetings on January 16<sup>th</sup>, February 11<sup>th</sup> and February 21<sup>st</sup>. At the January 16<sup>th</sup> the students presented pictures and ideas they had prepared in class to the group. At the February 11<sup>th</sup> meeting four area concepts/designs that were created by Learning Landscapes were reviewed. The concepts were a direct result of the photo survey given to students/staff/parents/community. The main goals, needs and wants were also

---

identified. After reviewing all four design concepts the taskforce, including the students, selected a concept with six identified priorities (Appendix G)

The February 21<sup>st</sup> meeting was a community meeting facilitated by Graduate Student, Sarah Doyle, Pat Healy and Vicki Berkly of Learning Landscapes-UC-Denver College of Architecture & Planning University of Colorado Denver where all members of the taskforce including students were presented with the final design based on the photo survey's and prior taskforce meetings.

Students participating on the taskforce were presented with the option of natural playscape during the first taskforce meeting on January 11<sup>th</sup>. While they liked the natural playscape photos they were more concerned with the surface of the playground and having additional structures for all students to play on. Shade, Climbing Structures and the Sand Box were all priorities of the students.

The student's participation and insight led to the prioritization of the surface, climbing structures and sand area. They really are excited about improving their existing play yard and having the opportunity to participate in the design process. The four students have provided the majority of feedback during the meetings. They did an amazing job!

Students will have the opportunity to participate in the actual construction of the project by work days painting the court surfaces and constructing and planting community/school gardens.

### **Question #7**

School staff and administration, and the greater community/neighborhood contributed to the project planning and design by attending the NES Play Yard Taskforce meeting listed above in questions #7. The meetings were advertized through the Parent Action Committee for NES and by direct email invitations from the school principal. A community meeting on the 21<sup>st</sup> of February was advertised in the Montrose Daily Press on February 18<sup>th</sup> – 21<sup>st</sup>. The activities for the meetings were described in question #7. The adult attendees at the meetings comprised of school staff (6), district administration (3) and invested community members (7) including a Certified Landscape Architect and Certified Arborist that provided their time as an in-kind donation. The meetings were facilitated by Jason Arebalos, Director of Property Services for the School District, Cara Godbe, Northside Elementary Principal and Mindy Baumgardner, Communication and Special Project Coordinator

The same photo survey that was distributed to staff and students at NES was also made available as an online survey on the district website [www.mcsd.org](http://www.mcsd.org) for the community at large. The link to the survey was advertised in the weekly newsletter and sent via email to all 158 parents of NES students with email addresses on file with the school.

Input from school staff and administration, and input from the community neighborhood contributed to the prioritization of the safety and maintenance components of the project. While appealing, the natural playscapes did not render much support due to the potential safety hazards of splinters and rot associated with untreated materials. Rocks were one of the natural

---

playscapes that both the adults and students liked. Not only did the rocks define the areas of the play yard they provide recreational and educational opportunities for the students with climbing and potential geological studies.

### **Question #8**

#### **Letters of Support-Attached**

### **Question #9**

The majority of students NES serves are from families with very limited resources, and the school focuses its limited resources on student achievement. However, the school administration and staff firmly believe improving the school play yard will improve the physical fitness of the entire student population and will not only help the school teach lifelong health and fitness but will positively influence student achievement. The school and community's need for these funds is compelling in that this opportunity would allow stakeholders a great sense of pride. In a small town and within the Northside community, the school is the source of a variety of resources for students and families. The school is charged with educating a diverse group of students. Not only does the school house and work closely with the NCHC, Northside also has Family Resource Room where families can access the internet, food, clothing as well as parenting and learning resources for families. This play yard project is yet another way that the school can serve its families and the greater community. As the school honors and encourages diversity, this project would show that a depressed area of town and under-served populations can work towards and build a dream- a first class play yard! Schools should be the beacon that calls the community and families and securing this grant would be one way that Northside can serve its stakeholders.

The school and the School District have very limited resources for improving school play yards and the project will not get done if GOCO funds are not secured. NES and MCSD would have to continue looking for other funding sources to make the NES Navigator Project a reality. The school would likely do what they have done in the past, which is to raise small amounts of funds to affect small changes on the playground. The vast majority of school fundraising efforts in the last 15 years have been to support the playground while many other needs at the school are also apparent (i.e. books for students, supplies for teachers, technology). Through this process of analyzing the current state of our playground facilities and use, researching the possibilities has identified that several of the current structures (climbing web, monkey bars and one set of swings) are unsafe and need to be removed as soon as possible. When these safety measures are taken, the students and Northside community will have even fewer options for engaging in physical activity.

In regards to the cash match requirement 100% of the cash match (\$15,500) is secured with funding coming from the City of Montrose (\$1,500), MCSD (\$4,000), NES (\$5,000), and NCHC (\$5,000) with additional funding sources being sought. A grant application was submitted to Colorado Health Foundation on February 15, 2013 requesting \$15,000. The project also has a commitment from Alpine Bank and McKinstry Energy Firm (final amounts pending). Other



---

potential funders are USDA Rural Development and Valley Food Partnership/LiveWell. Funds have been raised by the school in a variety of ways. A Hat Day was held in late January where students and staff could wear a hat all day if they donated to our playground project. The school is currently planning a walk-a-thon so that students are actively participating in raising money as it aligns with the goal of the project.

The project will include approximately \$12,000 worth of in-kind donations from the City of Montrose, MCSD, a Landscape Architect, and a local nursery. We live in a very generous community where individuals and agencies want to see our kids succeed.

### **Question #10**

It is expected that approximately \$5,000 to \$7,500 per year will be allocated for this project and its needed upkeep. This estimate stems from previous experience with up keep on other projects in the district, and the proposed types of material being used. It is assumed that the rubber materials proposed, while low maintenance and long lasting, will need to be changed out or added due to usage and wear. With a cost of \$5.00 per cubic yard, it is estimated that 500 cubic yards will be needed yearly for upkeep (\$2,500 annually). The additional funds will be used for landscaping maintenance, paint, irrigation repairs and general upkeep of the equipment (chains for the swings, rope, etc.). The school district's Property Service Department will be responsible for maintenance. Funding for the upkeep and maintenance of the project will come from the Maintenance budget fund, which is funded yearly in the amount of \$350,000.

## Northside Elementary School - School Play Yard Initiative

### PHASE I - Based on Top 6 Priority Items - Estimate of Probable Landscape Costs

This estimate includes the installation of primary play structure areas, one new swing set, a climbing structure, expanded concrete w/ hard surface games, and a shade structure

Category	Unit	Unit Cost	Quantities	Total Cost
<b>Play Equipment, Structures &amp; Surfacing</b>				
Primary Play Equipment (Pirate Ship & Sand Box)	LS	\$43,816.00	1 \$	43,816.00
Swings (3 bay 6 seat)	LS	\$3,241.00	1 \$	3,241.00
Relocate & Reuse 1 existing Swing Set (in Demolition Cost)	LS	\$0.00	1 \$	-
Installation & Freight	LS	\$11,450.00	1 \$	11,450.00
<b>SUBTOTAL</b>				<b>\$ 58,507.00</b>

<b>Play Surfacing (12" EWF Delivered/Installed)</b>				
Play Surfacing (12" EWF Delivered/Installed)				
Swings Area #1	SF	\$2.70	3,350 \$	9,045.00
Primary Play Structure Area	SF	\$2.70	3,130 \$	8,451.00
<b>SUBTOTAL</b>				<b>\$ 17,496.00</b>

<b>Concrete &amp; ADA Accessibility</b>				
Concrete Flatwork- 5' Sidewalk - 4" depth	SF	\$4.00	1,905 \$	7,620.00
Concrete Flatwork- 8' Sidewalk (Main Walk) - 4" depth	SF	\$4.00	2,038 \$	8,152.00
Concrete mow band, 8"x6"	LF	\$11.00	55 \$	605.00
Concrete Ramp at Play Pits	EA	\$1,500.00	1 \$	1,500.00
Colored Concrete Flatwork- 4" depth - Navigation	SF	\$6.00	439 \$	2,634.00
<b>SUBTOTAL</b>				<b>\$ 20,511.00</b>

<b>Asphalt</b>				
Earthwork and Drainage	LS	\$3,000.00	1	\$3,000
New Asphalt: 4" Depth (Courts)	SF	\$1.80	3,125 \$	5,625.00
<b>SUBTOTAL</b>				<b>\$8,625.00</b>

<b>1/8 Mile Jogging Track Crusher Fines Cost</b>				
Crusher Fines, 4' WIDE X 4" depth	SF	\$1.50	925 \$	1,387.50
Crusher Fines Stabilizer	SF	\$1.20	925 \$	1,110.00
Steel Edging	LF	\$5.00	355 \$	1,775.00
<b>SUBTOTAL</b>				<b>\$ 4,272.50</b>

<b>Site Work &amp; Grading/Drainage &amp; Asphalt Striping</b>				
Tetherball Striping	EA	\$150.00	2 \$	300.00
Hopscotch Striping	EA	\$400.00	1 \$	400.00
Basketball Court Striping	EA	\$400.00	1 \$	400.00
Basketball Nets	EA	\$20.00	2 \$	40.00
4-Square Striping	EA	\$250.00	1 \$	250.00
Reuse Existing Tetherball Poles (in Demolition Cost)	EA	\$0.00	0 \$	-
<b>SUBTOTAL</b>				<b>\$ 1,390.00</b>

<b>Gateway</b>				
Main Entrance Gateway Feature (Primary)	EA	\$5,000.00	1 \$	5,000.00
Gateway (Secondary)	EA	\$2,000.00	1 \$	2,000.00
Signage	EA	\$500.00	1 \$	500.00
<b>SUBTOTAL</b>				<b>\$ 7,500.00</b>

**Site Improvements Total: \$ 118,301.50**

## Northside Elementary School - School Play Yard Initiative

PROJECT START-UP COSTS		
<b>Project Start Up</b>		
Typical construction mobilization	\$5,000.00	\$5,000
<b>Infrastructure</b>		
Typical infrastructure construction/repair	\$2,500.00	\$2,500
<b>Demolition</b>		
Typical Demolition	\$0.00	\$0
<b>Architecture Engineering and Coordination</b>		
4% of construction cost	\$4,732.06	\$4,732.06
<b>Owner Representative Fees</b>		
5% of construction cost	\$0.00	\$0.00
<b>Contingency Cost</b>		
6.5% of construction cost	\$7,689.60	\$7,689.60
<b>Project Start-Up Total:</b>		<b>\$19,922</b>

### COST RECAP

Site Improvements Price:	\$ 118,301.50
Project Start Up Price:	\$ 19,921.66

<b>PROJECT GRAND TOTAL PRICE:</b>	<b>\$ 138,223.16</b>
-----------------------------------	----------------------

### ALTERNATES:

Recondition & Seal Existing Asphalt	ADD	3895	\$0.95	\$3,700.25
<b>Deduct From Concrete to Asphalt on 8' Main Sidewalk</b>				
Concrete Flatwork- 8' Sidewalk (Main Walk) - 4" depth	SF	\$4.00	-2,038	\$ (8,152.00)
Painting for Delination along Pathway	LS	\$500.00	1	\$ 500.00
New Asphalt: 4" Depth (Courts)	SF	\$1.80	2,038	\$ 3,668.40
<b>SUBTOTAL</b>			<b>\$</b>	<b>(3,983.60)</b>

**RESOLUTION 2013-05**

**A RESOLUTION SUPPORTING A GRANT APPLICATION FOR A SCHOOL PLAY YARD GRANT FROM THE STATE BOARD OF THE GREAT OUTDOORS COLORADO TRUST FUND FOR FUNDING OF THE PLAY YARD EQUIPMENT FOR THE MONTROSE COUNTY SCHOOL DISTRICT RE-1J AT NORTHSIDE ELEMENTARY SCHOOL**

WHEREAS, the City of Montrose supports improvements to the Montrose County School District play yard; and

WHEREAS, the City of Montrose recognizes the play yard as an asset for the youth of the community; and

WHEREAS, the City of Montrose supports the Great Outdoors Colorado grant application for the School Play Yard; and

WHEREAS, the City of Montrose will request \$100,000 from Great Outdoors Colorado to develop the school play yard.

**NOW, THEREFORE, BE IT HEREBY RESOLVED BY THE CITY COUNCIL OF THE CITY OF MONTROSE THAT:**

- Section 1:** The City Council of the City of Montrose strongly supports the application to Great Outdoors Colorado.
- Section 2:** The City Council of the City of Montrose will authorize the expenditure of funds in the amount of \$1,500.00 to meet its terms and obligations of any Grant awarded.
- Section 3:** This resolution shall be in full force and effect from and after its passage and approval.
- Section 4:** The City Council of the City of Montrose has entered into an intergovernmental agreement with the Montrose County School District RE-1J to ensure the maintenance of the School Play Yard project in a high quality condition for its useful life. As stated in the Intergovernmental Agreement, the Montrose County School District RE-1J will appropriate funds for maintenance in its annual budget.
- Section 5:** This resolution shall authorize the Mayor of the City of Montrose to sign the grant agreement with Great Outdoors Colorado if the grant is awarded.

ADOPTED this \_\_\_\_ day of \_\_\_\_\_, 2013, by the Montrose City Council.

**CITY OF MONTROSE, COLORADO**

**ATTEST:**

\_\_\_\_\_  
Thomas Smits, Mayor

\_\_\_\_\_  
Lisa DelPiccolo, City Clerk

**INTERGOVERNMENTAL AGREEMENT  
BETWEEN THE CITY OF MONTROSE AND THE  
MONTROSE COUNTY SCHOOL DISTRICT RE-1J**

This Agreement is made this \_\_\_\_\_ day of \_\_\_\_\_, 2013 between the City of Montrose (“the City”) and Montrose County School District RE-1J (“School District”);  
Witnesseth:

**I. Recitals**

1. The City, at the request of the School District has applied for and received a grant from Great Outdoors Colorado, (GOCO) for a new play yard located at 423 North Fifth Street, Montrose, CO;

2. The School District is an ineligible recipient of the grant and the parties intend by this agreement for the City to be the conduit through which the School District will receive the benefit of the grant and perform the obligations under the grant;

3. The Grant Agreement is attached to this agreement as Exhibit “A”;

4. The School District hereby binds itself to the City for all of the City’s obligations stated in the Grant Agreement;

5. The School District hereby conveys to the City a limited interest in the school district property shown on Exhibit “B” which limited property interest shall be for the purposes of satisfying the terms and conditions of the Grant Agreement;

Therefore, in consideration of the mutual promises stated below and other valuable consideration, the parties agree:

**II. Agreement**

6. The City with the School District’s assistance has attempted to fulfill all the conditions precedent to obtain the grant stated in the Grant Agreement. The School District will cooperate with the City and provide all documents necessary for the City to fulfill the conditions precedent. The School District further assumes all other City liabilities, and binds itself to the City for all the City’s obligations to GOCO, contained in the Grant Agreement, including the obligation to maintain the project components for 25 years, or the useful life of the Project; in accordance with product warranties and/or generally accepted standards in the parks/recreation community.

7. The City does not assume any obligation to the School District to construct, operate, or maintain the improvements contemplated by the grant.

8. To the fullest extent permitted by law, the School District agrees to indemnify and hold harmless the City, and its officers and its employees, from and against all liability, claims, and demands, on account of any breach, injury, loss, or damage, which arise out of or are connected with this Agreement and the Grant Agreement, or the construction, operation, use and maintenance of project under said grant agreement, if such injury, loss, or damage, or any portion thereof, is caused by, or claimed to be caused by, the act, omission, or other fault of the School District or any subcontractor of the School District, or any officer, employee, or agent of the School District or any subcontractor of the district, or any other person for whom School District is responsible. The School District shall investigate, handle, respond to, and provide defense for and defend against any such liability, claims, and demands, and to bear all other costs and expenses related thereto, including court costs and attorneys' fees. The School District's indemnification obligation shall not be construed to extend to any injury, loss, or damage which is caused by the act, omission, or other fault of the City, except for claims by GOCO. The School District shall be responsible to the City for any claim under the Grant Agreement, in the same manner and extent as the City may be responsible to GOCO. The School District hereby waives and releases the City from any claim arising under this Agreement or the Grant contract.

9. The School District shall construct, operate, use and maintain the improvements contemplated by the Grant Agreement on the property shown on Exhibit B, in accordance with established School District policy for playground maintenance and the Grant Agreement.

10. By executing this agreement, the parties do not waive any immunity or limit liability contained in the Colorado Governmental Immunity Act or other law; do not create a multi-year fiscal obligation; and do not create any other financial obligation not supported by a current appropriation.

11. This agreement does not create any rights in any individual not a party to this agreement.

12. This document, and exhibits, shall constitute the entire agreement of the parties.

13. The School District hereby grants to the City a limited license in, and right of entry to, the property shown on Ex. "B" for the purposes stated in the Grant Agreement, Ex. "A", and for no other purpose. Such license and right of entry shall be exercised only in the event the School District has failed to comply with the requirements of the Grant Agreement and shall include all rights reasonably necessary, as determined by the City, for the City to enter upon the property and perform its obligations to GOCO under the Grant Agreement. This right includes the ability of the City to use its employees, agents or outside contractors. This license and right of entry further includes the right to enter upon the property with any equipment or vehicles.

14. This agreement, including the limited right of entry and license, shall terminate simultaneously with the termination of all City obligations under the Grant Agreement.

**ATTEST:**

**SCHOOL DISTRICT  
BOARD OF EDUCATION**

\_\_\_\_\_

\_\_\_\_\_

\_\_\_\_\_  
[Title]

\_\_\_\_\_  
[Title]

**ATTEST:**

**CITY OF MONTROSE**

\_\_\_\_\_

\_\_\_\_\_

\_\_\_\_\_  
Lisa DelPiccolo, City Clerk

\_\_\_\_\_  
Thomas A. Smits, Mayor